



Twin Oaks at Heritage Pointe

250 Savannah Terrace + Wentzville, Mo 63385

636-542-5500 + Fax: 636-542-5519

www.twinoaksheritagepointe.com

We offer free medical transportation on Thursdays from 9am-1pm to locations in Wentzville, O'Fallon, and Lake St. Louis. If an appointment is in a different location or on a different day, transportation can be arranged for a minimum fee of \$25.

Other Transportation Resources:

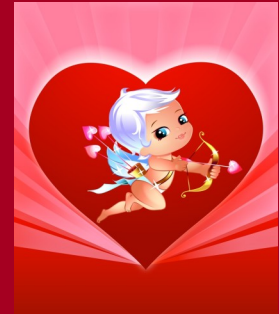
Green Lantern Senior Center- Bus transportation is available Monday-Friday if residents would like to participate in activities there. Residents are asked to be ready by 8:30 am for pickup. There is a suggested donation of \$2.00 for the round trip. Lunch will be served for a suggested donation of \$3.25. The return trip will be after 1:30 pm On Mondays, there is additional shopping at Walmart and on Thursdays, they can transport to Schnucks. Please call Green Lantern Senior Center-(636) 327-1889 for more information.

OATS- (314) 894-1701. They provide transportation the first Tuesday of each month to a wide variety of locations. Appointments may only be from 10:00 am until 1:00 pm Please call at least 24 hours in advance. The cost is \$6.00 for the round trip. They are no longer able to transport for pain management, physical therapy or dialysis appointments, but can provide transportation for medical or essential shopping. They may be able to increase the amount of trips they make as more residents use their services.

EMT- (636) 240-4410. Please call for an appointment at least 24 hours in advance. Trips may be covered by insurance, please check with your provider. The private pay cost for ambulatory residents is \$20 for the first 5 miles, then \$2 each mile after that. Wheelchair transport is \$35 for the first 5 miles, then \$3 each mile after that.

Mark Your Calendar!

- ◆ Tuesday, February 21st from 9am-12pm in the office behind the front desk, a representative from Beltone will be here to offer **free** hearing screenings and hearing aid cleanings. Please sign up for an appointment at the front desk.
- ◆ Rosary will be offered every Friday, weather permitting, at 9:30 am in the Country Kitchen with the exception of February 10th.
- ◆ A Weight Loss and Wellness group will be offered every Monday at 2 pm in the Fitness Center.



Birthdays

Resident Birthdays

Rosemary Schultz 23

Mary Bryant 27

Staff Birthdays

Dee Jackson 8

Kathy Swanegan 16

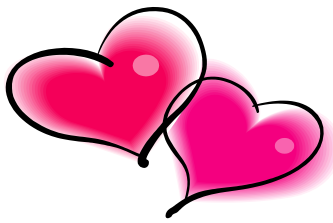
Andrew Brannan 20

Nic Neumann 24



FEBRUARY

2012



CHIEF EXECUTIVE OFFICER

Timothy Blattel 636-542-5202

ASSISTANT DIRECTOR

Justin Blattel 636-542-5406

DIRECTOR OF RESIDENT SERVICES

Michelle Palmer 636-542-5504

ADMISSIONS COORDINATOR

Kathy Swanegan 636-542-5422

DIRECTOR OF MAINTENANCE

Leon Blattel 636-542-5506

DIRECTOR OF HOUSEKEEPING

Susan Vogt 636-542-5400

- ◆ We want to thank those of you that are using the "File of Life" magnets on your refrigerators. This helps emergency workers provide you with the best care possible. If you have any questions about the File of Life program or would like to have another magnet, please see us at the front desk.
- ◆ If you have heavy or bulky items that you would like to donate, the Salvation Army is available to come to your apartment and pick them up. Please call (314) 535-0057 to arrange a pick up time.
- ◆ Please be sure that all dishes are returned to dietary after use.
- ◆ If you and your spouse will be celebrating an upcoming anniversary, please let us know so that we may celebrate your anniversary with you!
- ◆ Please be aware that due to risk of fire, we kindly ask that you do not use candles or candle warmers in your apartment.
- ◆ If you would like to use the therapeutic massage tub located in the spa, please be sure to sign up at the front desk.
- ◆ Massage Therapy will be offered the first and third Tuesday of the month from 9am-12pm in our spa. Please call Jackie King at (636) 327-3261 to schedule an appointment. Pack-



HAPPY

VALENTINE'S DAY!



Chaplain's Corner:

"Embraceable you!" Remember Frank Sinatra singing the words, "I love all the many charms about you; above all, I want these arms about you, my sweet embraceable you"?

Yes it is romantic love that can spark this kind of embrace. But more important, is that God's love sparks an even more intimate embrace. You are a lamb in His arms; He holds you close to His heart. Your Shepherd-God has surrounded you with His most tender loving care!

But what makes you this irresistible you? Are you so charming and so loving that no one can resist you? We know the truth! The picture is: wrinkles, skin blotches, scars, hard of hearing, hard to please; all the result because we are by nature sinful and unclean. There is no charm. But there is the grace of your Lord Jesus! Because you are accepted and forgiven, the saving work of Jesus is all about THE EMBRACEABLE YOU!

This Valentine's Day may this love of Jesus fill your hearts and lives with a love that is shared with all those who may be near and dear to you as well as those who may unloving or not even known to you.

Rev. Lloyd Hackbarth, Chaplain